

Aerial 1 : Mercers South, Nutfield, Redhill



All boundaries are approximate

Aerial 2 : Mercers South, Nutfield, Redhill



All boundaries are approximate

Fig 1 : View N along proposed haul route from access off A25

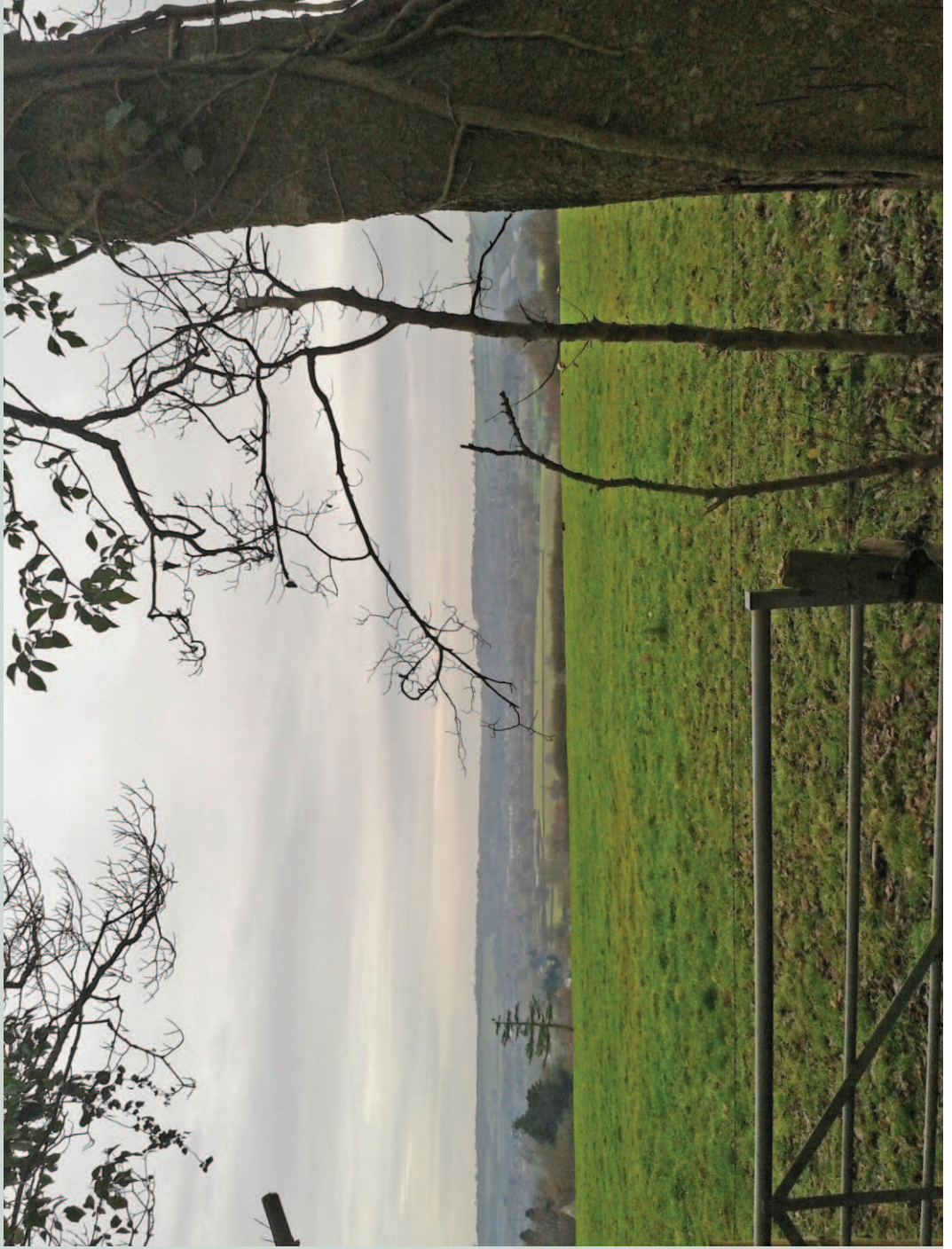


Fig 2 : View S up toward A25 of proposed haul route

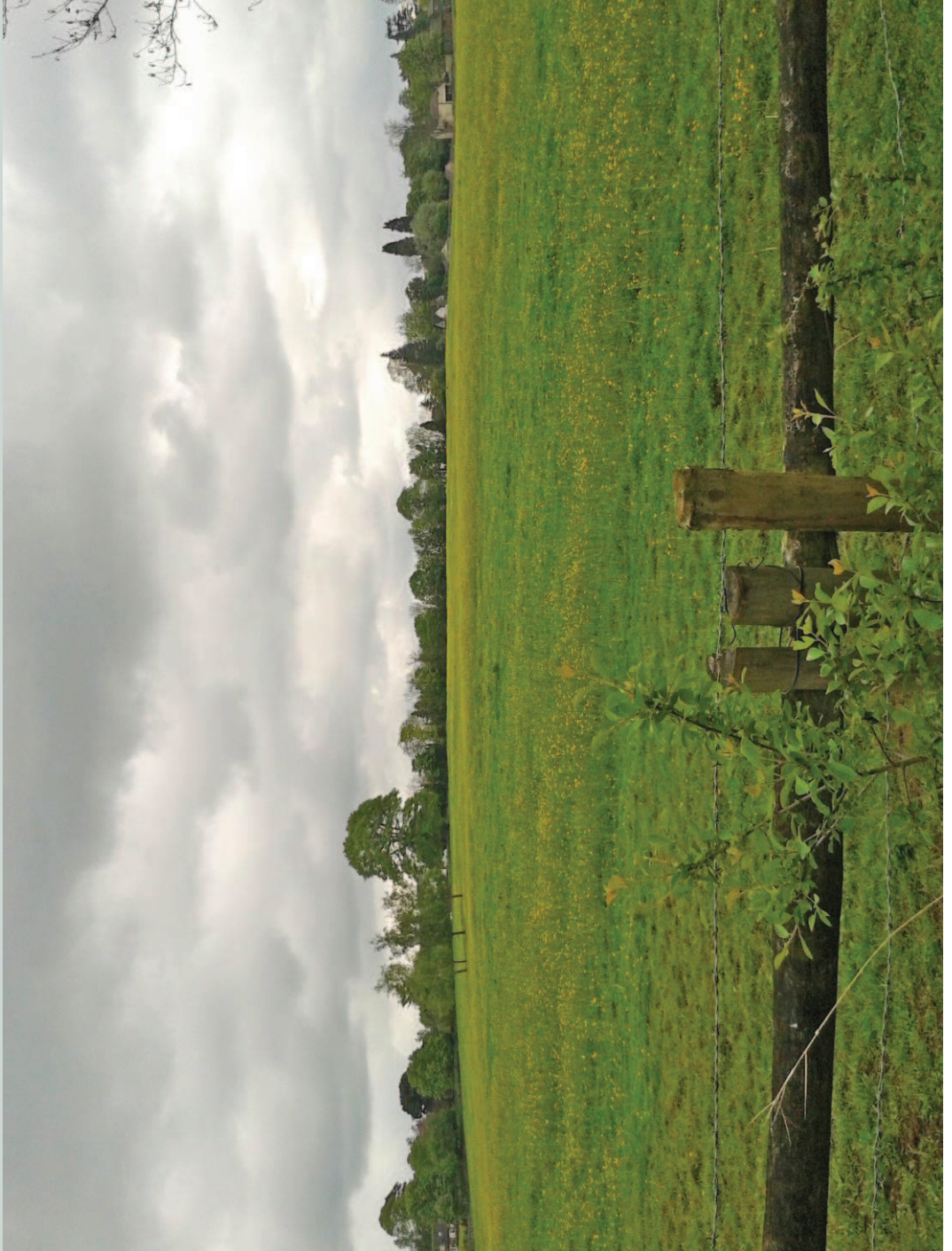
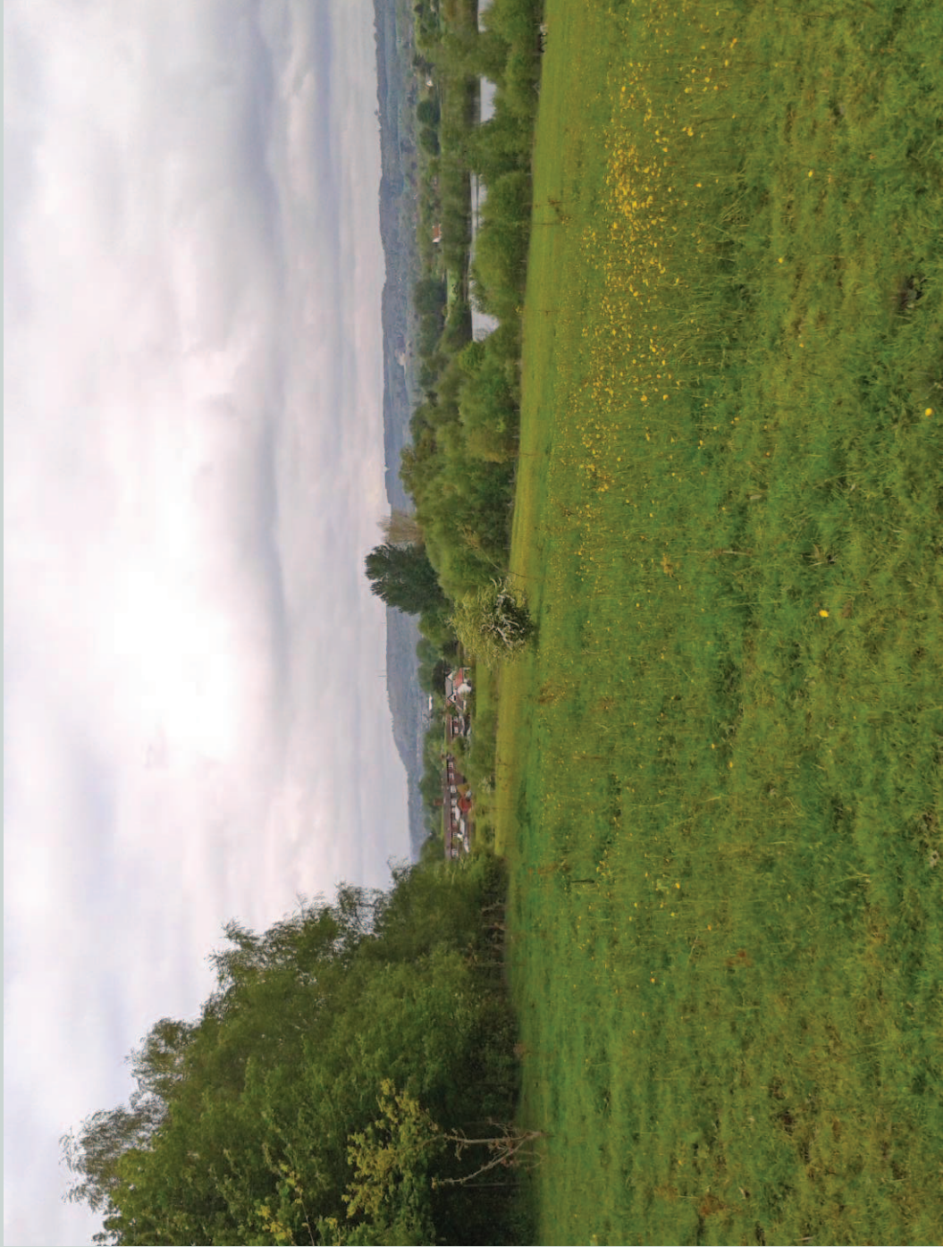


Fig 3 : View E from FP175 toward Glebe Cottage



Fig 4 : View W of Peytons Cottages from proposed haul route



**Fig 5 : View NNW from proposed haul route toward
extraction area beyond Glebe Lake**

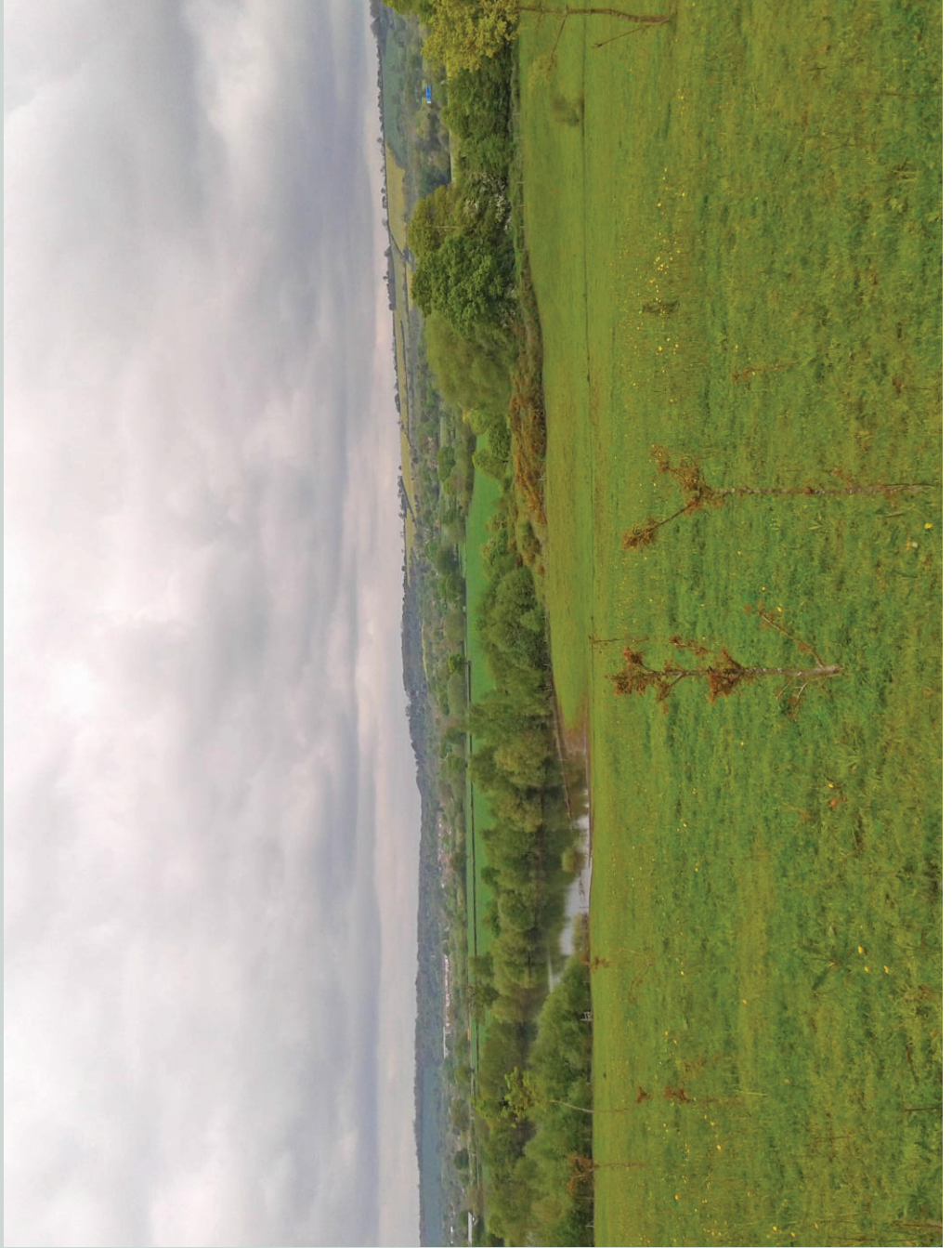


Fig 6 : View NW along FP173 and proposed extraction area

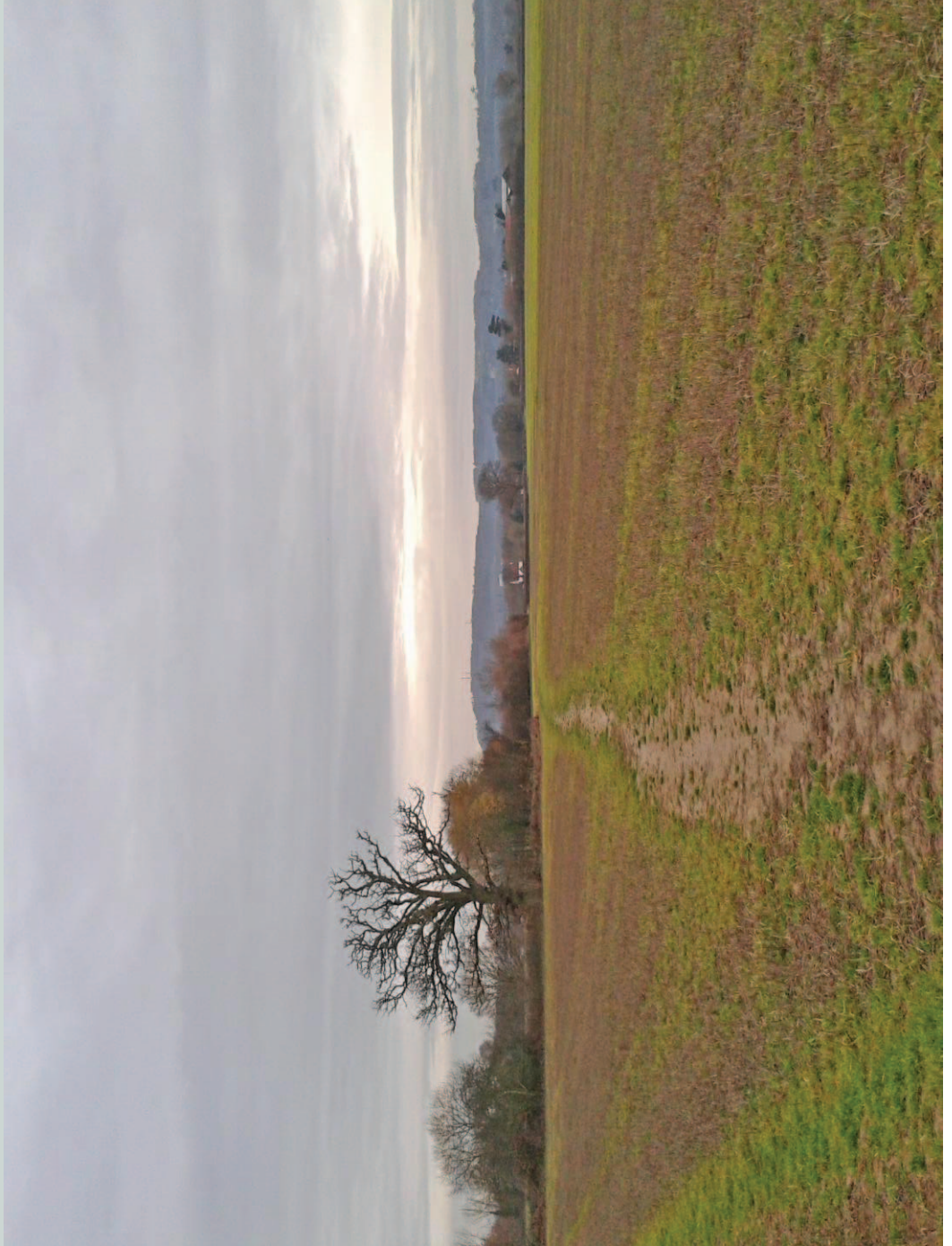
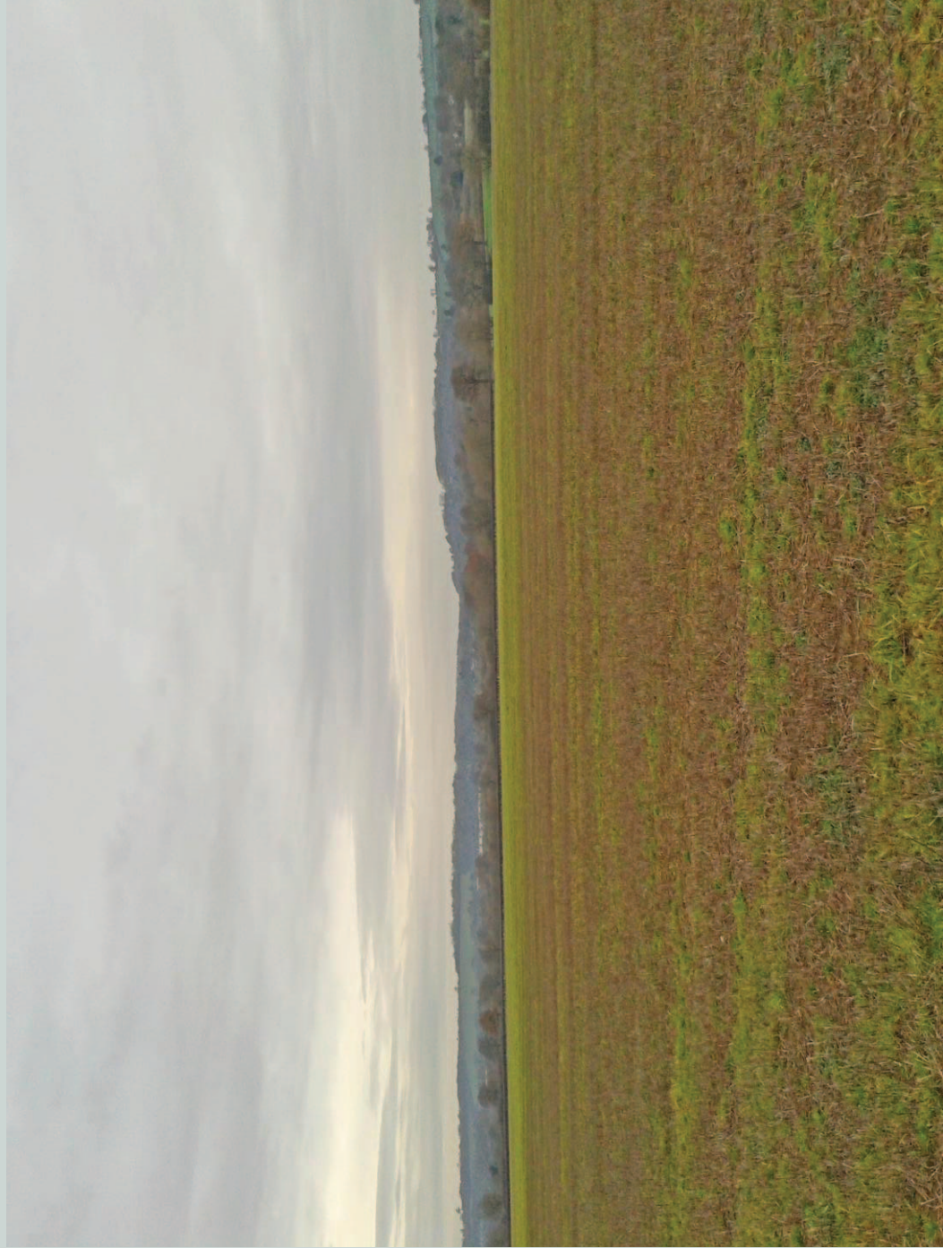


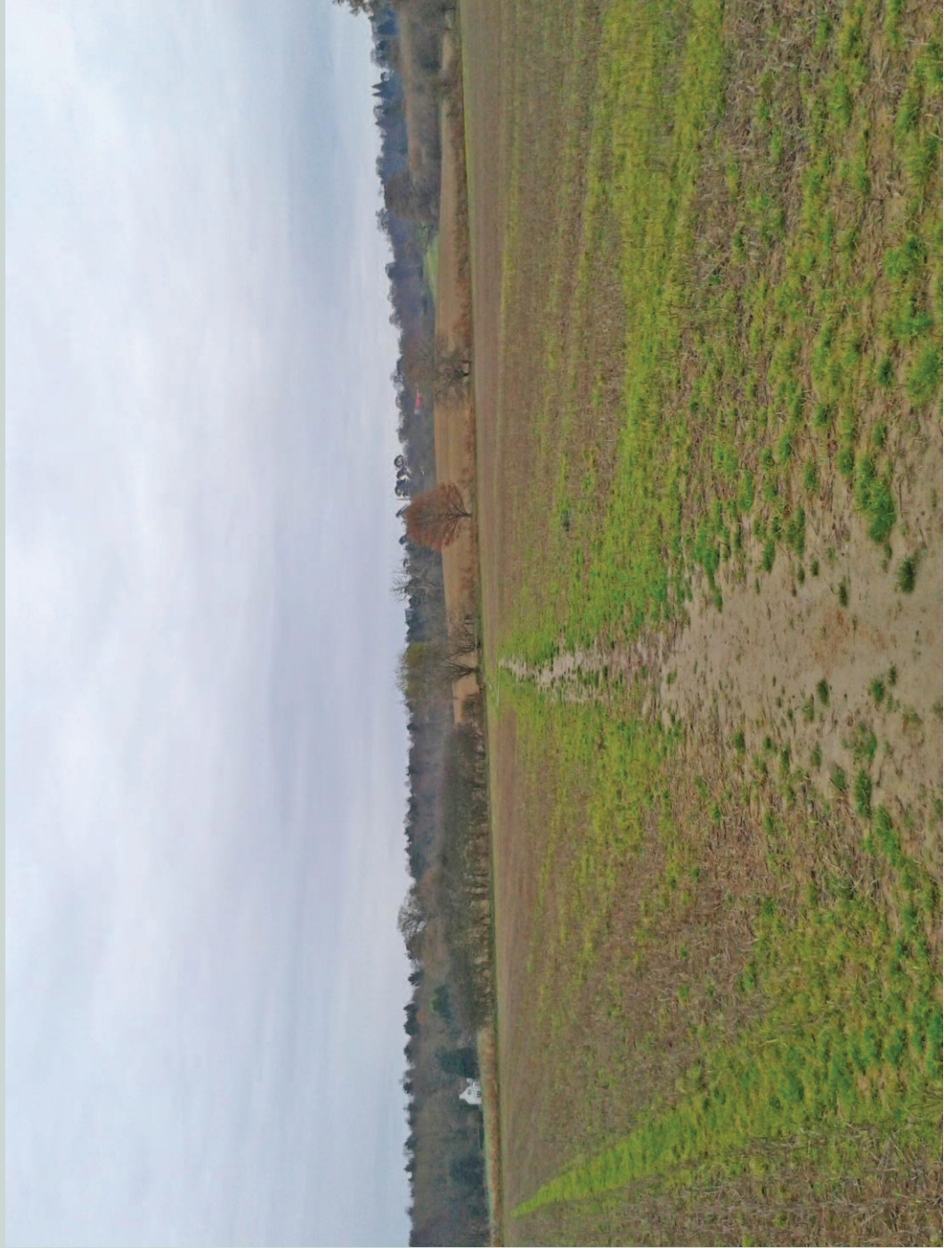
Fig 7 : View N across proposed extraction area



**Fig 8 : View NE from FP173 across
proposed extraction area toward M23**



Fig 9 : View E along FP173 of proposed extraction area



This page is intentionally left blank